

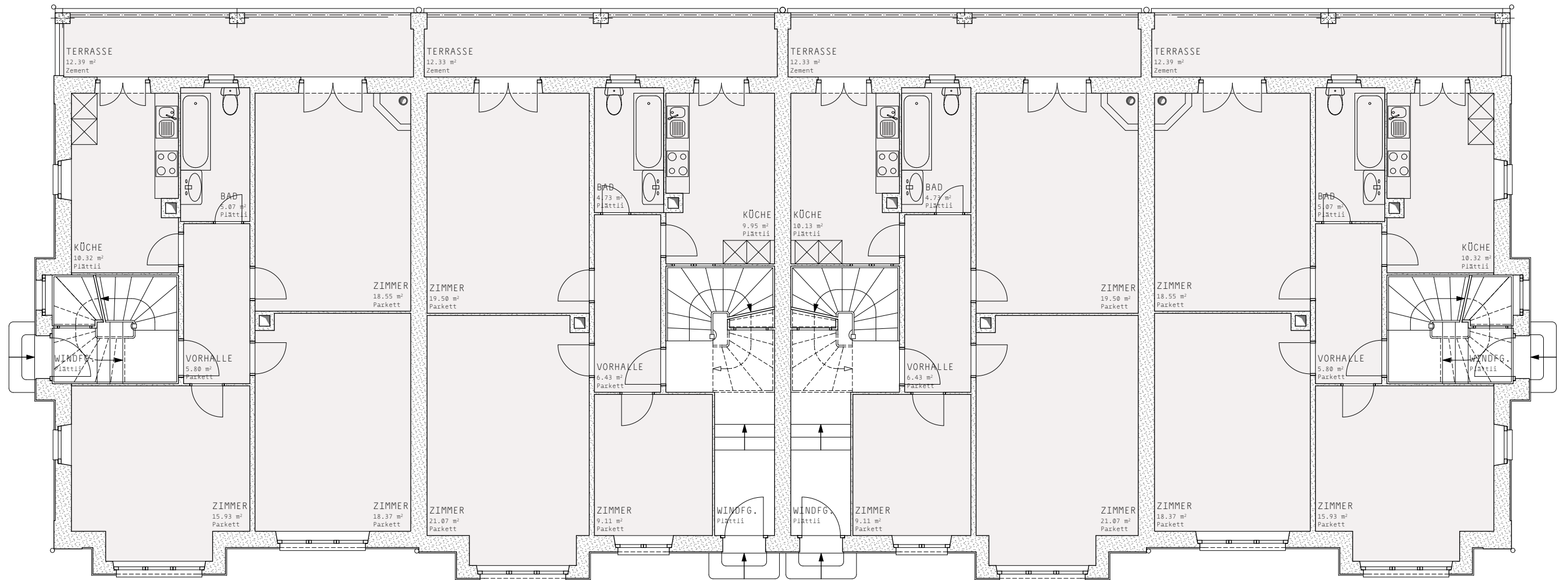
St. Alban-Ring 203 , B a s e l

Grundriss UG ————— grisard'architektur

————— dipl. Arch. ETH SIA, Hardstrasse 81, 8004 Zürich

————— 2017





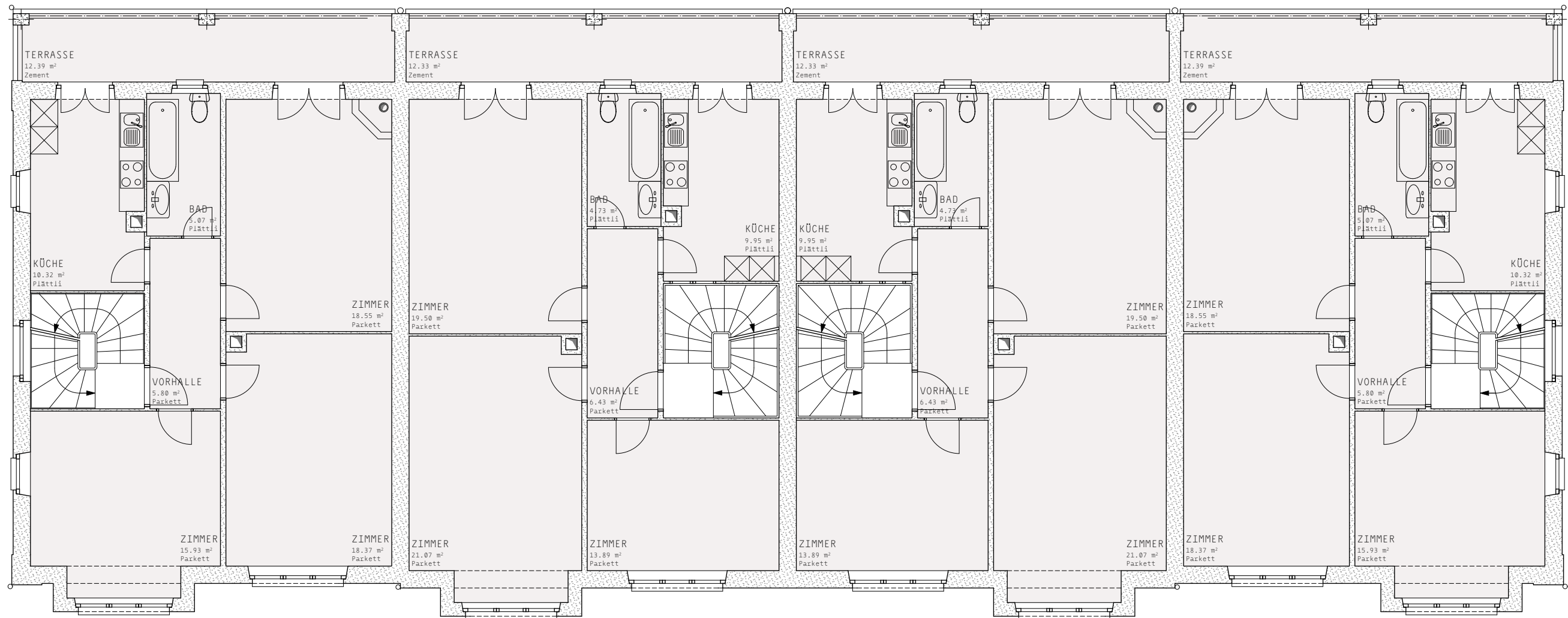
St. Alban-Ring 203 , B a s e l

Grundriss EG ————— grisard'architektur

————— dipl. Arch. ETH SIA, Hardstrasse 81, 8004 Zürich

————— 2017





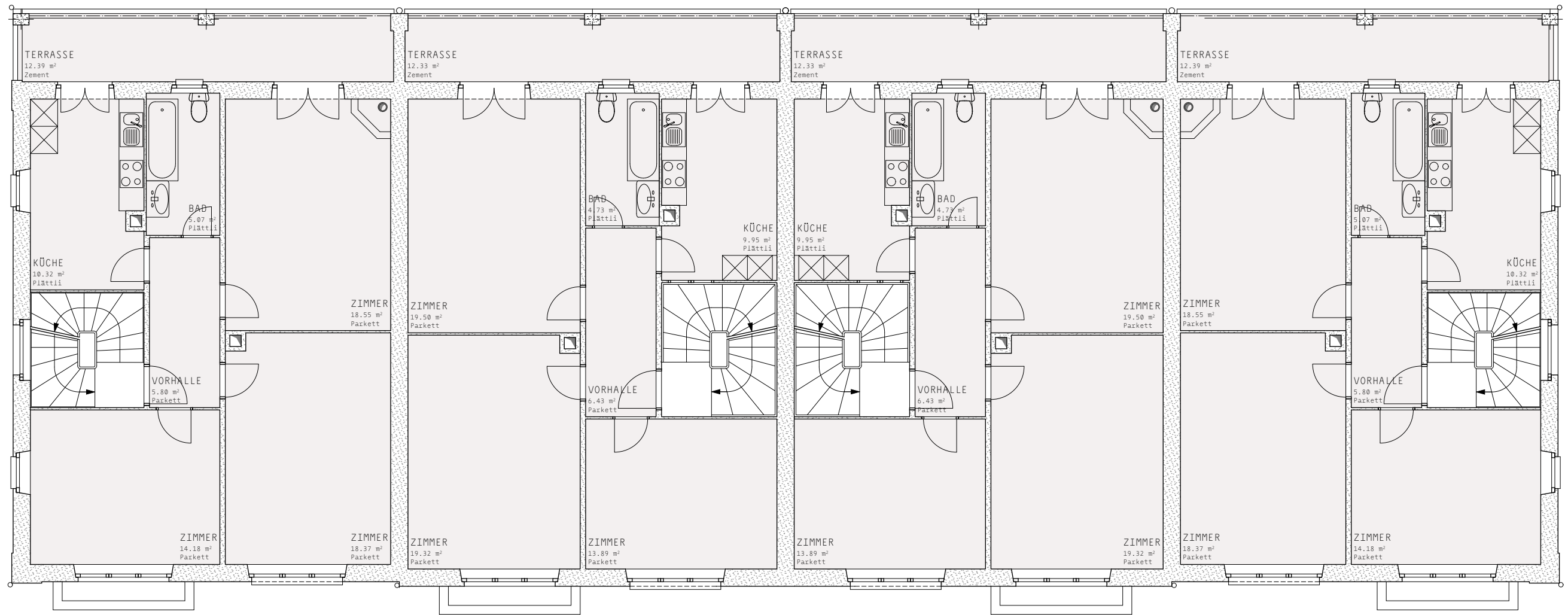
St. Alban-Ring 203 , B a s e l

Grundriss 1.OG ————— grisard'architektur

dipl. Arch. ETH SIA, Hardstrasse 81, 8004 Zürich

2017





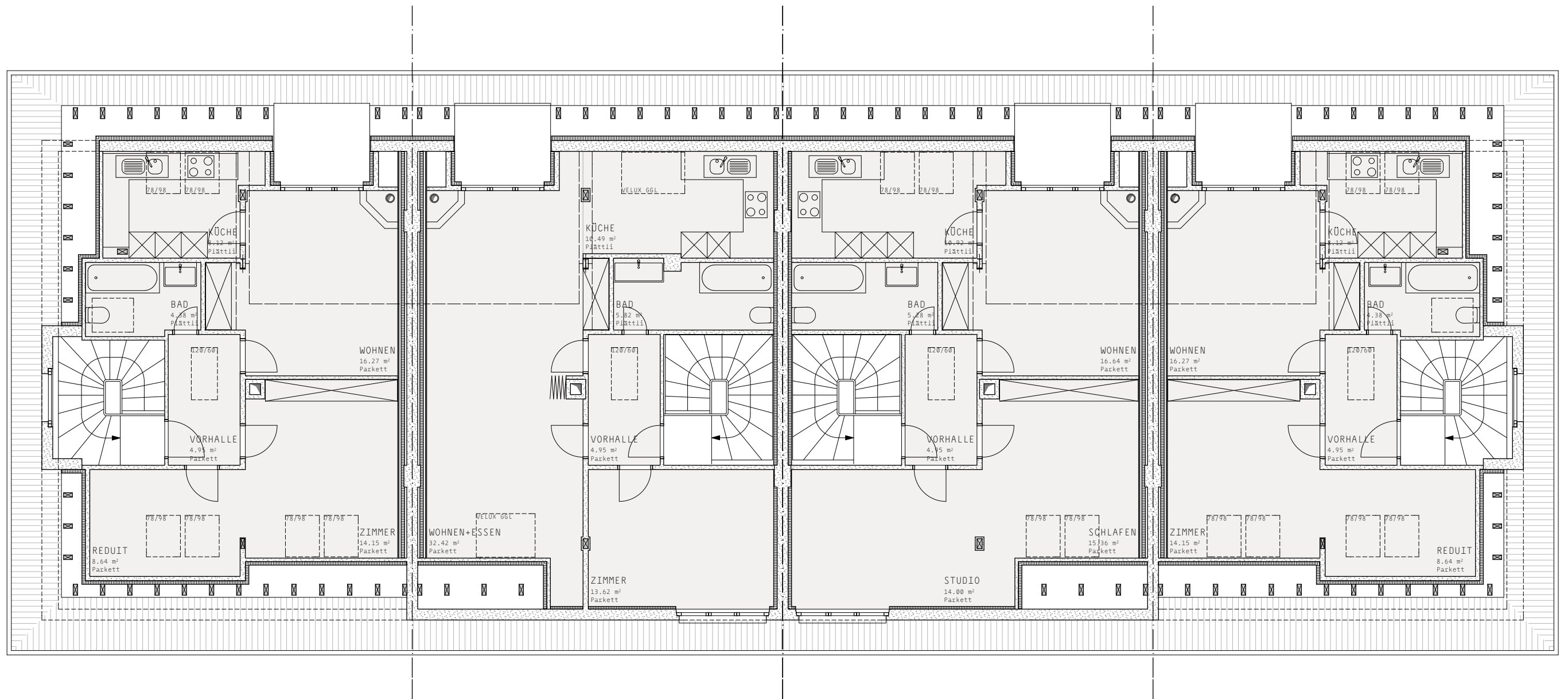
St. Alban-Ring 203 , B a s e l

Grundriss 2.OG ————— grisard'architektur

dipl. Arch. ETH SIA, Hardstrasse 81, 8004 Zürich

2017





St. Alban-Ring 203 , B a s e l

Grundriss DG ————— grisard'architektur

————— dipl. Arch. ETH SIA, Hardstrasse 81, 8004 Zürich

————— 2017







St. Alban-Ring 203 , B a s e l

Nordfassade ————— grisard'architektur

————— dipl. Arch. ETH SIA, Hardstrasse 81, 8004 Zürich

————— 2017





St. Alban-Ring 203 , B a s e l

Südfassade ————— grisard'architektur

————— dipl. Arch. ETH SIA, Hardstrasse 81, 8004 Zürich

————— 2017





St. Alban-Ring 203 , B a s e l

Westfassade, Ostfassade — grisard'architektur

dipl. Arch. ETH SIA, Hardstrasse 81, 8004 Zürich

2017







St. Alban-Ring 203 , B a s e l

Westfassade, Ostfassade — grisard'architektur

dipl. Arch. ETH SIA, Hardstrasse 81, 8004 Zürich

2017

